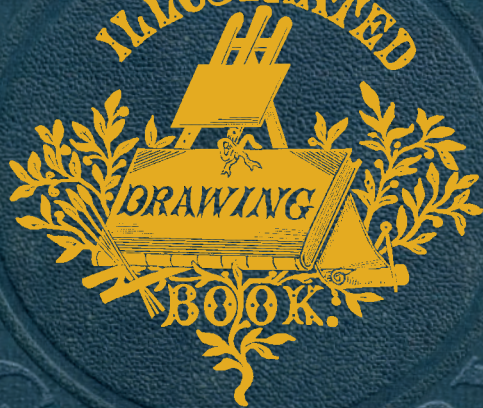


MIAAS

ILLUSTRATED



GALLERY



DRAWINGS & WATERCOLOURS

The Maas Gallery

15a Clifford Street London W1S 4JZ

Tel: 020 7734 2302

mail@maasgallery.com www.maasgallery.com

Full cataloguing is in the online version of this catalogue

ISBN: 978-1-9164430-1-3



1 **George Owen Wynne Apperley, 1884-1960**

Venus

Watercolour; signed and dated 1917

14¼ x 10¼ inches



2 **Edward Frederick Brewtnall, 1846-1902**

The Dragon's Cave (Dunald Mill Hole, Lancashire)

Watercolour and bodycolour; signed, labelled with artist's name and address, titled
16 x 22 inches



3 **Anthony Augustus Frederick Sandys, 1829-1904**

Augusta Jones

Pencil; signed and dated 1864

10 x 9½ inches



4 **Harold Speed, 1872-1957**

Nude

Chalk; labelled

24¾ x 11½ inches



5 **Frederick Spencer, Exh. 1891-1924**

Old Books

Watercolour; signed

6¼ x 10½ inches

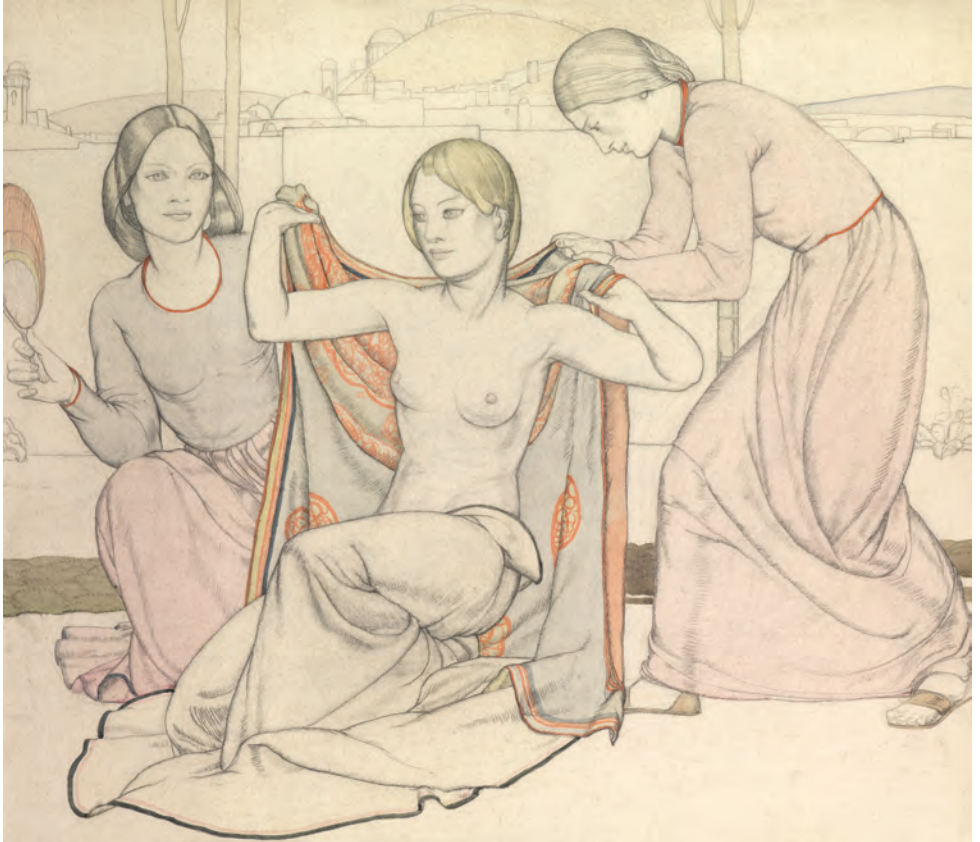


6 **Mary Forster, 1853-1885**

Polly the Parrot

Watercolour; signed and dated 1878, titled on the back

6 x 4¼ inches



7 **Averil Mary Burleigh, 1883-1949**

The Bathers

Watercolour and pencil

18 x 20½ inches



8 **William Strang, 1859-1921**
Study for an etching: Music, 1910
Chalks; signed
14 x 12 inches



9 **Maxwell Ashby Armfield, 1882-1972**

The Bather's Tent at Lulworth, 1908

Watercolour on coloured paper; titled and dated 1908

11¼ x 9¼ inches



10 **Maxwell Ashby Armfield, 1882-1972**

A Pair of Still Lifes: Roses and Carnations

Watercolour; both monogrammed

9 x 5¼ inches



11 **Sidney Herbert Sime, 1867-1941**

Moth Time

Watercolour; signed, titled and inscribed
verso 'Lord Dunsany/ Lord Dunsany
Brangwyn/ Sevenoaks'
10½ x 7 inches

12 **Sidney Herbert Sime, 1867-1941**

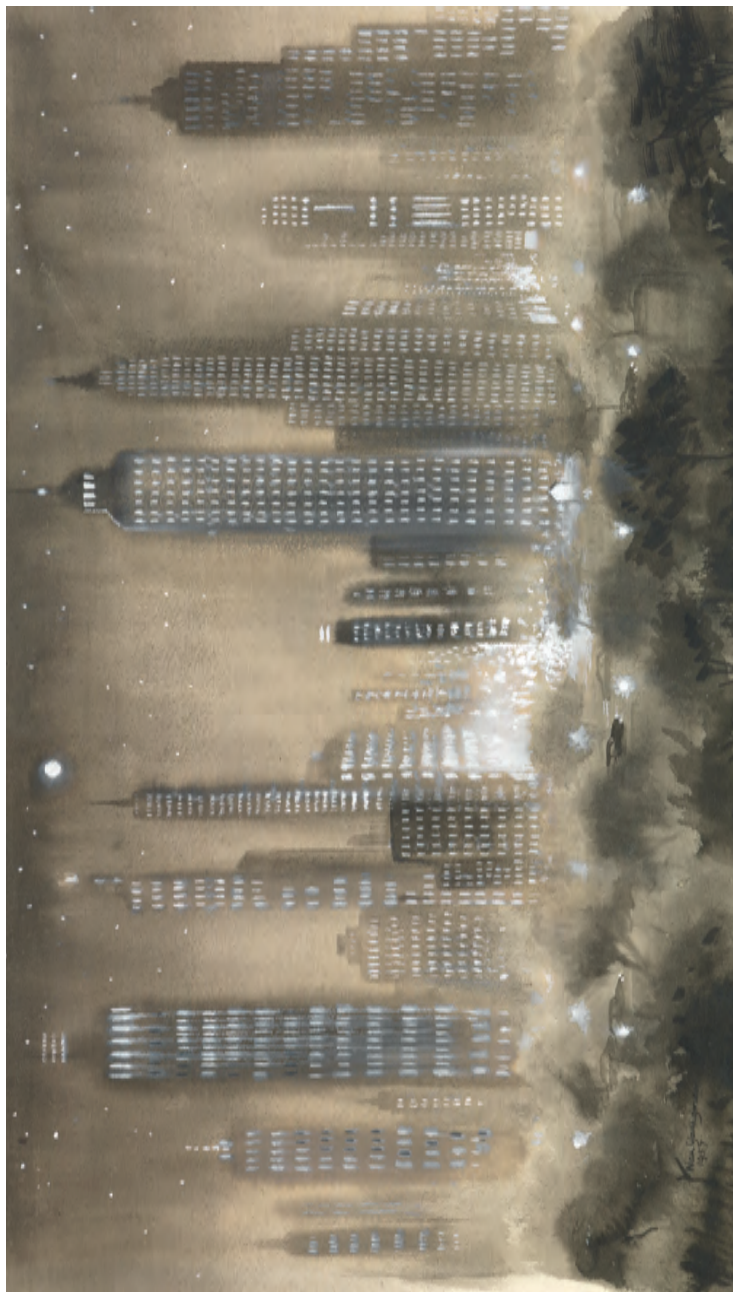
More Birds of a Feather

Charcoal, ink and white on card; signed
20 x 13¾ inches

1st Ghost: "Hullo old man. I'm deligh-
grieved to see you in this place. Why, you
built that tin chapel down our street."

2nd Ghost: "O hang it you needn't remind
me of that. You preached in it!"





13 **Nan Youngman, 1906-1995**

New York Lights

Watercolour; signed and dated 1957

11 x 19 inches



14 **Alfred Kingsley Lawrence, 1893-1975**

Head of a Soldier, Bois de Trones, 1916

Coloured chalks

16½ x 11 inches



**15 Alfred Kingsley Lawrence,
1893-1975**
Betty Johnson-Hall, Artist, 1939
Charcoal; titled
15¾ x 11½ inches



**16 Alfred Kingsley Lawrence,
1893-1975**
Study of a Seated Woman
Ink
7 x 5 inches



17 **Alfred Kingsley Lawrence, 1893-1975**

Self-Portrait, 1916

Chalk and watercolour

11½ x 8¼ inches



18 **Alfred Kingsley Lawrence, 1893-1975**

A Northumberland Fusilier, 1916

Chalks

17¾ x 14¾ inches



19 **Alfred Kingsley Lawrence, 1893-1975**

HRH Princess Alexandra, about 1945

Charcoal; titled

17¼ x 15 inches



20 **Attributed to Charles Allston Collins, 1828-1873**

Head of a Woman

Pen and ink

4¼ x 4 inches



21 **Circle of Millais**

Girl in a Hat

Pen and ink

6¾ x 4½ inches



22 **David Gentleman, b 1930**

The Thames and Glovers Island from Richmond Hill

Watercolour; signed

14 x 19 inches



23 **Henry Stacy Marks, 1825-1898**

Watching and Waiting

Watercolour heightened with bodycolour; signed

17 x 12 inches



24 **Frederic James Shields, 1833-1911**

'Violence' for the Chapel of the Ascension

Pen and ink; signed and titled

12¾ x 5¾ inches



25 **Frederic James Shields, 1833-1911**

'Courage' for the Chapel of the Ascension

Pen and ink

12½ x 4½ inches



26 **Frederic James Shields, 1833-1911**

'The Deceitful Venomous Tongue' for the Chapel of the Ascension

Pen and ink; signed; 12½ x 4¼ inches



27 **Frederic James Shields, 1833-1911**

'Deceit' for the Chapel of the Ascension

Pen and ink; signed and titled

12 ¾ x 5¾ inches



28 **Frederic James Shields, 1833-1911**
'Wickedness' for the Chapel of the Ascension
Pen, ink and wash
12¾ x 5¾ inches



29 **In the Manner of WB Richmond**

An Allegory of Idleness

Pencil and coloured chalks; inscribed verso 'F. Sandys...Abel(?) ...Shepherd and Sheep'

16 x 10 inches



30 **Arthur Coryndon Hansler Luxmoore, 1842-1891**

Short Commons

Watercolour and bodycolour with gum arabic; monogrammed and dated '67

6¾ x 7¼ inches



31 **Sir George Clausen, 1852-1944**
Prior's Hall Barn, near Widdington, Essex
Pen, ink and wash
14½ x 10 inches



32 **Edward Clifford, 1844-1907**

Leatherhead, Surrey

Watercolour; initialed, titled, dated '23.4.00' and inscribed 'Lilcot'

9½ x 13½ inches



33 **Edward Clifford, 1844-1907**

Rowfant, West Sussex

Watercolour; titled and dated '19.3.1900'

9½ x 13½ inches



34 **Edward Clifford, 1844-1907**

Court Grange

Watercolour; initialed, titled and dated '11.4.1900'

9½ x 13½ inches



35 **Edward Clifford, 1844-1907**
Saas-Fee, Switzerland
Watercolour; titled and dated 'Aug.17.1900'
9½ x 6½ inches



36 **19th Century Continental**
Head of a Woman
Red crayon; monogrammed 'EPC'
10¼ x 9¼ inches



37 **John Frederick Lewis, 1804-1876**

A Vaquero

Pencil; signed

15½ x 8¾ inches



38 **Sir William Blake Richmond,**
1842-1921

Study

Metalpoint; 9½ x 6½ inches



39 **George Louis Palmella Busson
Du Maurier, 1834-1896**

Hesitant Steps

Pencil; 5¾ x 4¼ inches



40 **William Edward Frost, 1810-1877**

Reclining Nude

Pencil

2¾ x 4 inches



41 **Philip Wilson Steer, 1860-1942**

Mother and Child

Chalk

12 x 10½ inches



42 **Thomas Cooper Gotch, 1854-1931**

Triptych of Angels

Pencil

11½ x 58¾ inches

43 **Thomas Cooper Gotch, 1854-1931**

Little Boo

Watercolour; signed and dated 1887, titled on the back

9½ x 7½ inches





44 **John Sergeant, 1937-2010**

Life Class, late '50s

Watercolour

22 x 30 inches



45 **John Sergeant, 1937-2010**

Geranium

Pen, ink and watercolour

19¾ x 12¾ inches



46 **John Sergeant, 1937-2010**

Life Drawing

Charcoal; signed

21¼ x 14¾ inches



47 **John Sergeant, 1937-2010**

Life Drawing

Chalks

13¾ x 14 inches



48 John Sergeant, 1937-2010

Marigold Hodgkinson, Artist, 1962

Pencil; inscribed verso

15 x 11¾ inches

49 John Sergeant, 1937-2010

*Study for the cover of The Island by
Gustav Herling*

Watercolour and ink; signed with Sergeant's
stripes motif and dated 1992

9¾ x 12½ inches

50 John Sergeant, 1937-2010

*Study for the cover of Of Illustrious
Men by Jean Rouaud*

Watercolour; signed with Sergeant's stripes
motif and dated 1994

11¾ x 16¼ inches





51 **Theodore Howard Somervell, 1890-1975**

*The Himalayas, near Tinki Dzong, on the 1922 Everest Expedition
with Mallory*

Pencil, watercolour and gouache; signed and dated 1922

10¼ x 14 inches

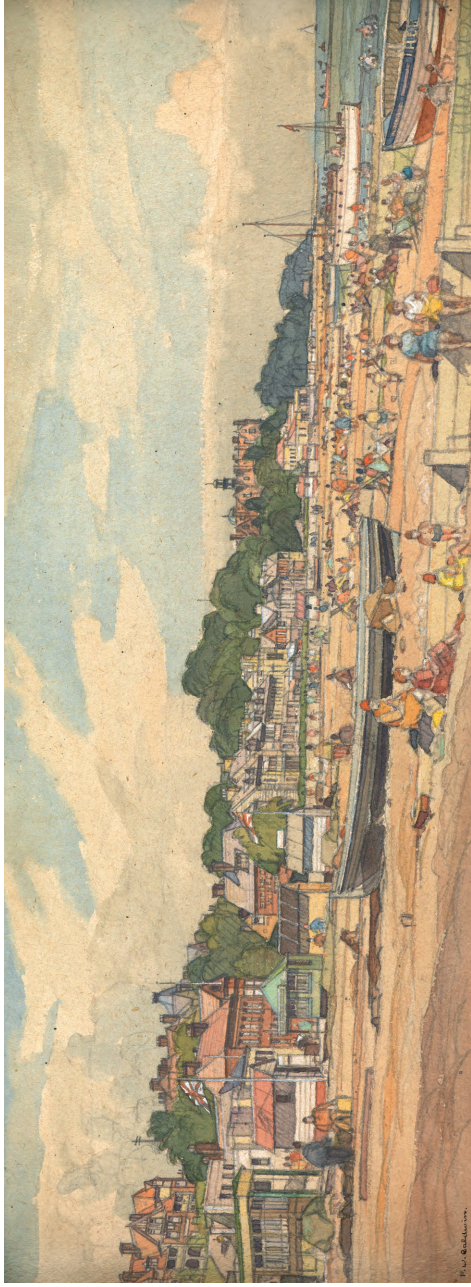


52 **Henry Tonks, 1862-1937**

Head of a Girl, c 1920

Coloured chalks; initialled

12 x 7½ inches



53 **Frederick William Baldwin, 1889-1962**
Felixstowe, Suffolk, for the LNER
Pencil and watercolour; signed, titled on old backing sheet
8 x 21½ inches



54 **George Adolphus Storey, 1834-1919**

From Kilburn, looking towards Hampstead

Watercolour; monogrammed and dated 1858, titled on old mount

4¾ x 9¾ inches



55 John William North, 1842-1924

*'The bat begins with giddy wing' -
Barley Field over the Hedge*

Watercolour with pencil with scratching out;
initialled and dated 1885, labelled with title
11½ x 17¾ inches

56 Thomas Mann Baynes, 1794-1854

*The Beavers' Pool, the Bear Pit and
the Pelicans' Enclosure at Regent's
Park Zoo, about 1835*

Pencil, watercolour and bodycolour; signed
and inscribed on the back, framed together
about 4½ x 8 inches each





57 **George Price Boyce, 1826-1897**

Valley of the Teme, a Sunny November Morning

Watercolour; signed, inscribed on the back and dated 'Nov. 22. 60', labelled

5½ x 7½ inches



58 **George Price Boyce, 1826-1897**

The Ticino Valley from Giornico

Watercolour; monogrammed and dated '17.7.'56', signed and inscribed on the back in Boyce's hand

5½ x 10½ inches



59 **George Price Boyce, 1826-1897**

Ruins of the Gama al-Hakim, Cairo

Watercolour; signed, inscribed 'Cairo' and dated 'Jan 1862', dated 'Jan 18 1862'
on the back and labelled with title

11¼ x 8¼ inches



60 **George Price Boyce, 1826-1897**

Annie Miller

Pencil; dated June 1860

3 x 5½ inches



61 William Blake, 1757-1827

A Visionary Head, for Varley

Pencil

6 x 8 inches

62 Sir Joseph Noel Paton, 1821-1901

*'The isle is full of noises': Stephano
and Trinculo led by Ariel*

Pencil

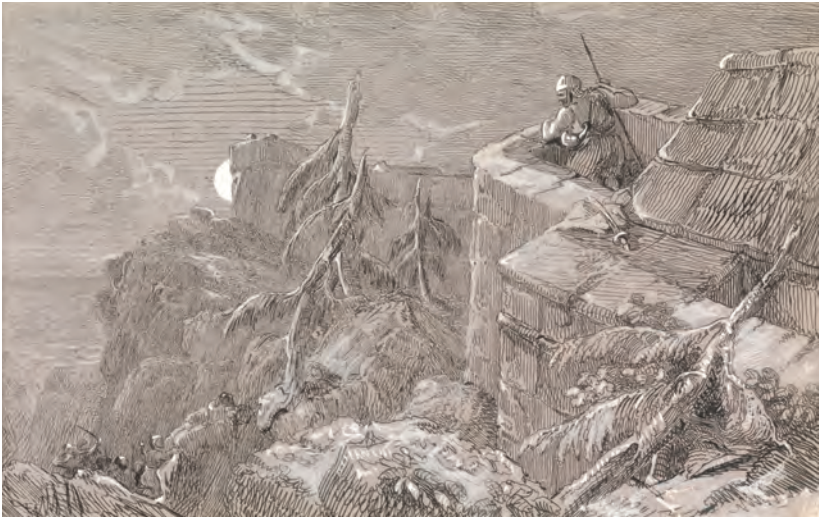
Diameter 10½ inches

63 William Bell Scott, 1811-1890

Storming the Castle

Pen and ink with bodycolour

5 x 8 inches





64 **Stanley Cornwell Lewis, 1905-2009**

Rest, c 1960

Pencil; signed and labelled with title and artist's address, with a James Bourlet Royal Academy Exhibition label dated 1960 (meaning it was sent in, not that it was selected)
10 x 24 inches



65 **Bernard Fleetwood-Walker, 1893-1965**

Study for The Model's Throne, 1940

Chalks; signed

16½ x 11 inches



66 **Dorothy Webster Hawksley, 1884-1970**

Les Indiscrètes

Watercolour, bodycolour and pencil; signed

23¼ x 12¾ inches



67 **Dorothy Webster Hawksley, 1884-1970**

Eve

Watercolour, bodycolour and pencil, heightened with white; signed and dated 1927

19¾ x 14 inches



68 **19th Century British**

An Allegory of Printing and Photography

Watercolour, bodycolour and pen and ink

4½ x 12½ inches



69 Frank Cadogan Cowper, 1877-1958

Fanny

Watercolour and pencil; signed and titled, inscribed on old backboard 'Sketch of a girl in crinoline dress/ by Frank Cadogan Cowper A.R.A/ 1 Edwardes Square Street/ Kensington/ Fanny Stevens, the shoemaker's daughter of Fairford, Gos./ Drawn in January 1903/ Given to the Sale in aid of the "Red Cross" Fund at Christie's March 1915'
12¼ x 10¼ inches



70 **John Ward, 1917-2007**

Daisies

Watercolour; signed and dated 1999

10 x 8¼ inches



71 **Edward Julius Detmold, 1883-1957**

Three White Cockerels

Watercolour on artist's board; signed and dated 1919

24 x 20½ inches

72 **19th Century British**

Girl in a Bonnet

Watercolour

Oval, 9¾ x 8¼ inches



73 **Edith Martineau, 1842-1909**

*Meadowsweet beside a Burn,
Invernesshire*

Watercolour and bodycolour; signed,
inscribed and dated 188[3?]

10 x 7½ inches





74 **Richard Redgrave, 1804-1888**

Sun Dappled Woods, Surrey

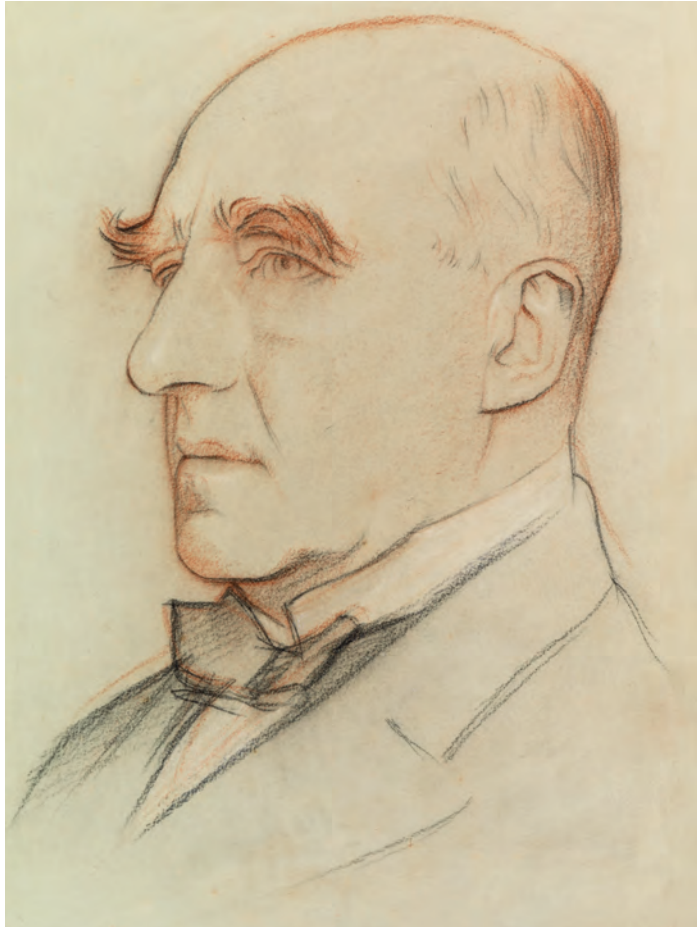
Watercolour and bodycolour

13½ x 9½ inches



75 **Thomas Matthews Rooke, 1842-1942**

The Tombs of Henry III and Queen Eleanor, Westminster Abbey
Watercolour and bodycolour; signed, titled and dated 1904, labelled
30 x 17 inches



76 Sir William Rothenstein, 1872-1945

Sir Arthur Pinero, Playwright

Coloured chalks

9 x 7 inches



77 Edward Robert Hughes, 1851-1914

Nora Beausire, daughter of the Liverpool art collector

Chalk; signed, titled and dated 1887

20 x 18 inches



78 **Edward John Gregory, 1850-1909**

Sketches of a Woman for Boulter's Lock, Sunday Afternoon, 1897

Pencil and watercolour

8½ x 12½ inches



79 **Albert Moulton Foweraker, 1873-1942**

Moonlight - Alameda de Hércules, Seville

Watercolour; signed

21 x 14 inches



80 **Albert Moulton Foweraker, 1873-1942**

Moonlight - a Garden in Seville

Watercolour; signed

13¼ x 9¾ inches



81 **Henry Holiday, 1839-1927**
Head of a Man, possibly Gaetano Meo
Pencil
6¼ x 5 ¾ inches



82 **Henry Holiday, 1839-1927**

Head of a Girl

Pencil and crayon

5½ x 6¼ inches



83 **William Lionel Wyllie, 1851-1931**

Convoy, The North Sea, 1916: Latitude 54° N, Longitude 2° 30' E

Watercolour; signed and inscribed with title

11 x 17 inches



84 **Claude Muncaster, 1903-1974**

Main Course and Bridge Decks aboard the Finnish Barque Favell
Watercolour; signed and dated 1930

14½ x 10½ inches



85 **Honor Charlotte Appleton, 1879-1951**

'A boy lay upon the hillside'

Watercolour and pencil; signed, titled in margin

11¼ x 10¼ inches



86 **Honor Charlotte Appleton, 1879-1951**

'She was in an ecstasy of her own'

Watercolour and pencil; signed, titled in margin

11½ x 9¾ inches



87 **Alexis Mossa, 1844-1926**

Queen Victoria in Nice, France

Watercolour; signed, inscribed 'La Reine allant en promenade' and dated '98
12 x 8¼ inches



88 **Frederick Walker, 1840-1875**

Miss Maria Ansdell

Pencil; initialled

6½ x 4½ inches



89 **Circle of Millais**

Sketch of a Girl

Pencil

9 x 7 inches



90 **Austin Osman Spare, 1886 -1956**

Green Sidereal

Watercolour and pencil on card; signed

12½ x 8¾ inches



91 **Giovanni Battista Costa, 1859-1938**

A Woodland Hideout

Watercolour and bodycolour; signed

25 x 17 inches



92 19th Century British

Choosing

Pen and ink

5½ x 4¾ inches

93 William Powell Frith, 1819-1909

Hurrying Girl

Pen and ink

6 x 3 inches



94 **Cecile Walton, 1891-1956**

Phyllis

Pencil; signed and titled

9¾ x 7¾ inches



95 **Charles Keene, 1823-1891**

A Rough Passage

Watercolour and bodycolour; inscribed 'by Charles Keene' and, on the back, 'This picture was given by Charles Keene to Edward Plimpton'

Diameter 12¾ inches



96 **William Henry Hunt, 1790-1864**

Girl Asleep in a Chair

Watercolour and bodycolour

11¼ x 9½ inches



97 **Albert Goodwin, 1845-1932**

Woolacombe Bay, North Devon

Watercolour, bodycolour and pencil; signed and dated 1915, labelled with title

13¾ x 20½ inches



98 **John McKirdy Duncan, 1885-1940**

Gravel-Pit: Night

Watercolour; signed, titled and inscribed on the back

12½ x 15 inches



99 **Violet Victoria Butler, 1888-1980**

Evening by the Godavari River, India

Watercolour; initialed, dated 1928 on the back

8 x 13¼ inches



100 **Alma Claude Burlton Cull, 1880-1931**

Mandalay by Moonlight

Watercolour; signed and dated 1924

7¾ x 13½ inches



101 **Caroline Conyers, 1768-1848**

Java Duck

Watercolour on vellum, inscribed with title

23 x 28 inches



102 **Attributed to George Howard, 9th Earl of Carlisle, 1843-1911**

Girl with Dog

Pencil

10 x 7 inches



103 **Alonzo Webb, 1888-1975**

Manhattan from Central Park West, for Collier's Magazine, 1950

Pastel; signed and dated 1950, labelled

20 x 26 inches

