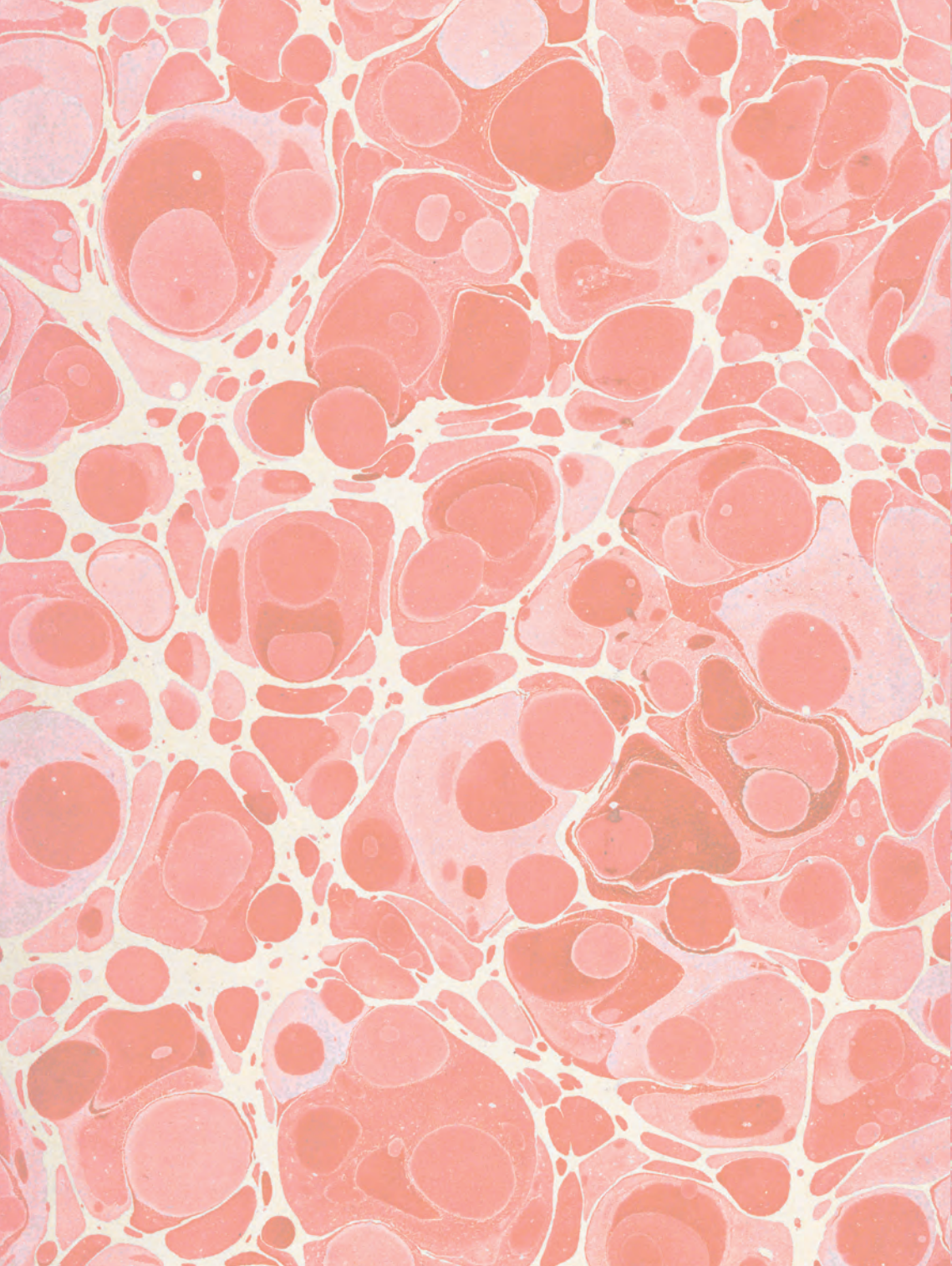
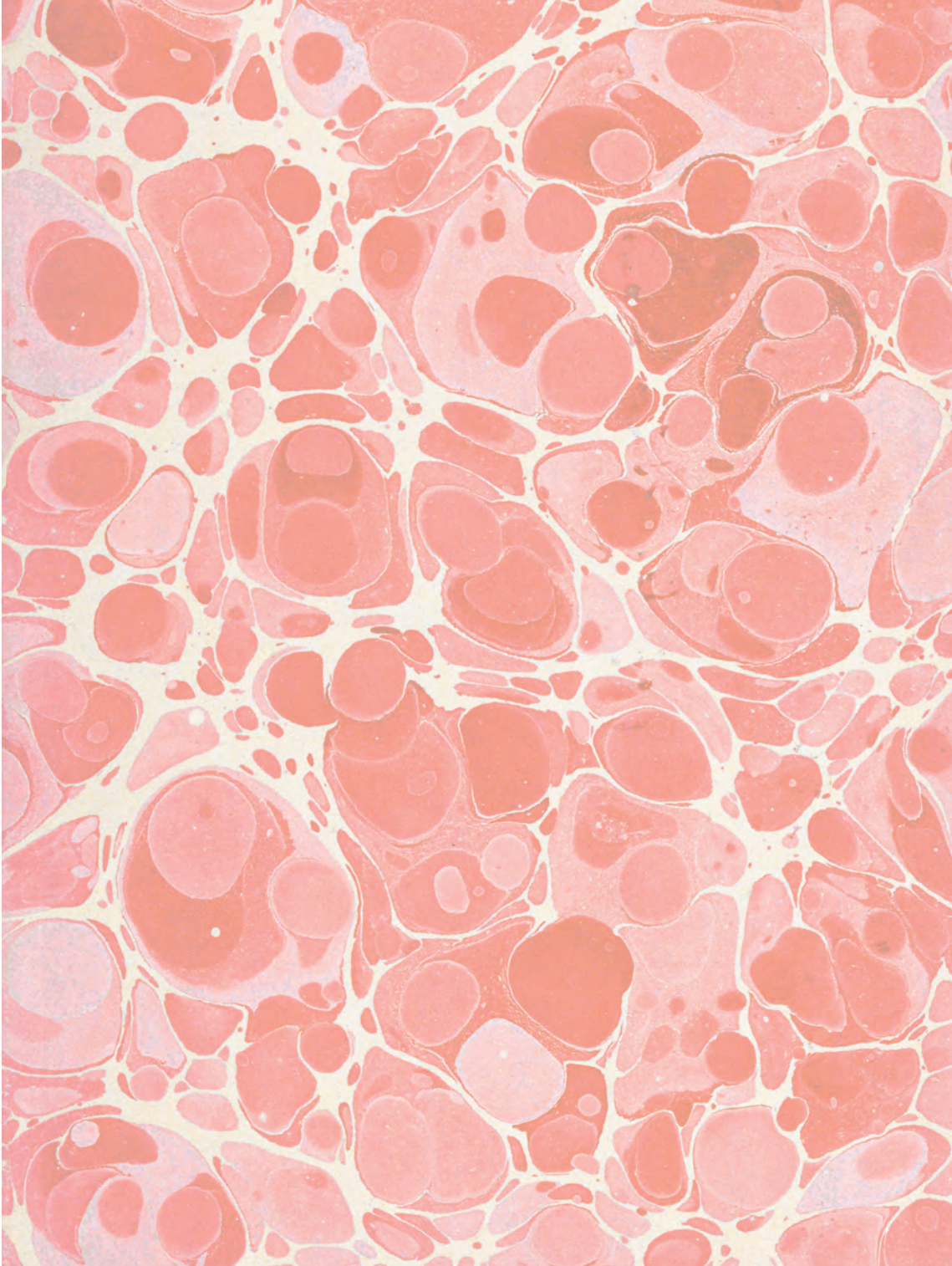


The image shows the front cover of a book. The cover is a deep red color with a fine, repeating pattern of small, stylized floral or geometric motifs. The text is printed in a gold, serif font. The title 'MAAS GALLERY' is at the top, and 'DRAWINGS' is below it. The cover is framed by a decorative border. On the left and bottom, there is a blue border with a repeating scrollwork pattern. On the right, there is a solid blue triangular corner piece.

MAAS GALLERY
DRAWINGS







MAAS GALLERY

DRAWINGS

In Memory of
John Christian 1942-2016

The Maas Gallery

15a Clifford Street London W1S 4JZ

Tel: 020 7734 2302

mail@maasgallery.com www.maasgallery.com

Full cataloguing is in the online version of this catalogue

ISBN: 978-0-9929382-3-9



1 **Walford Graham Robertson 1867-1948**

Sarah Bernhardt

Pencil; initialled, inscribed and dated 1888.

10 ½ x 4 ¼ inches



2 **Eric Harald Macbeth Robertson 1887-1941**

The Night Wind

Pencil and watercolour; signed, titled and dated 1913.

6 ½ x 7 ¾ inches



3 **Eric Harald Macbeth Robertson 1887-1941**

The Lovers

Pencil; signed and dated 'Oct 17/ 1910'.

6 x 9 ½ inches

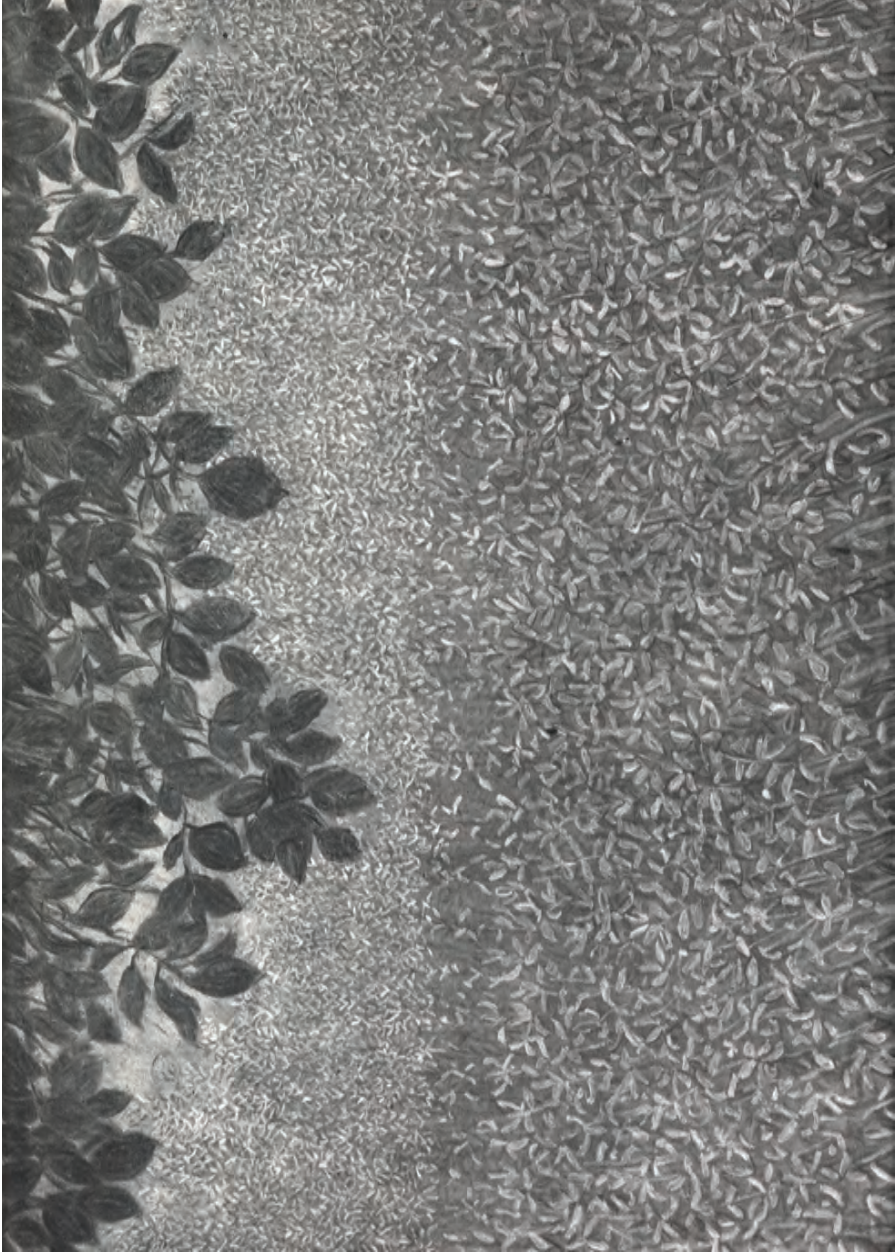


4 **Derwent Lees 1885-1931**
Lyndra, the Artist's Wife
Pencil; signed and dated 'Nov. '09'.
13 x 9 $\frac{3}{4}$ inches



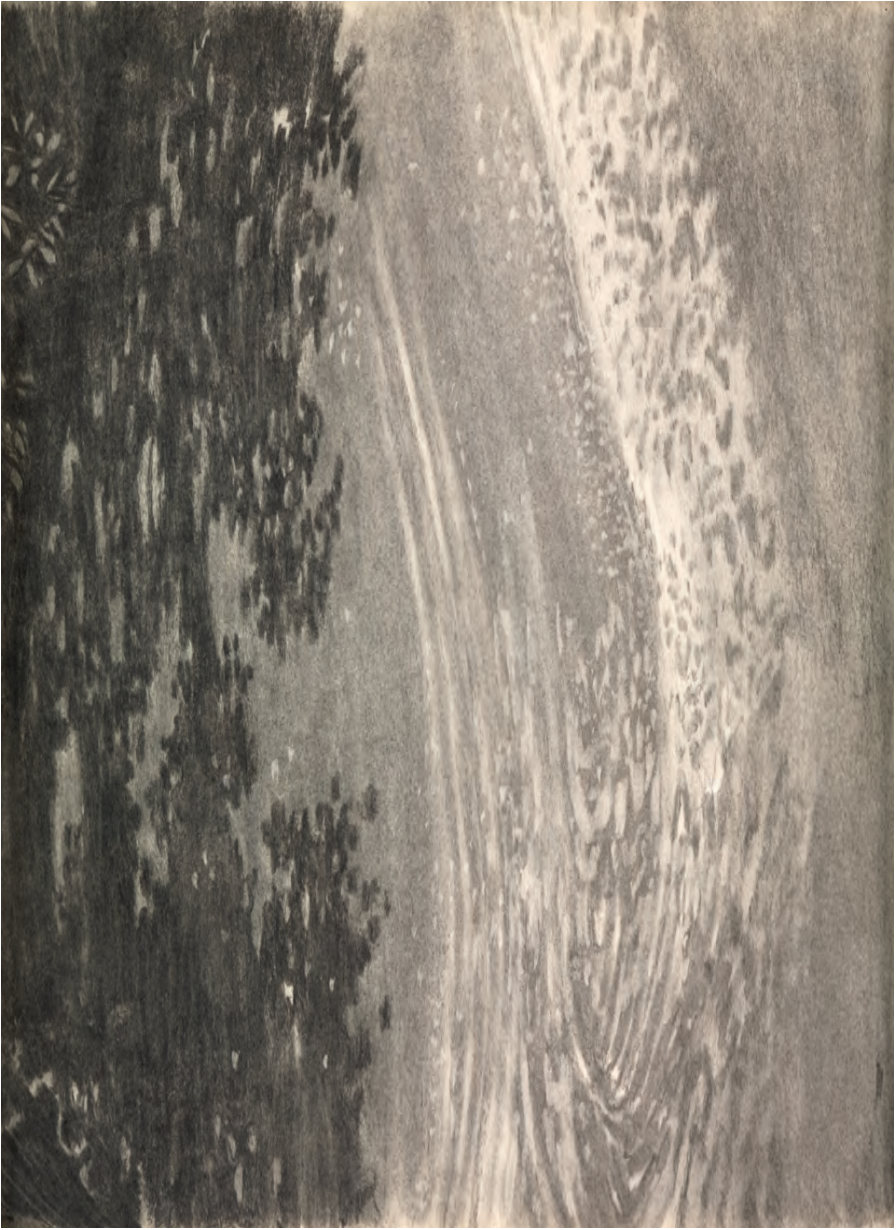
5 **Edward Middleditch 1923-1987**

Garden Night, 1979 Charcoal. 25 1/4 x 35 inches



6 **Edward Middleditch 1923-1987**

Plum Tree and Bean Field, 1979 Charcoal. 25 ¼ x 35 ¼ inches



7 **Edward Middleditch 1923-1987**

Eddies and Reflections Charcoal. 22 x 30 inches

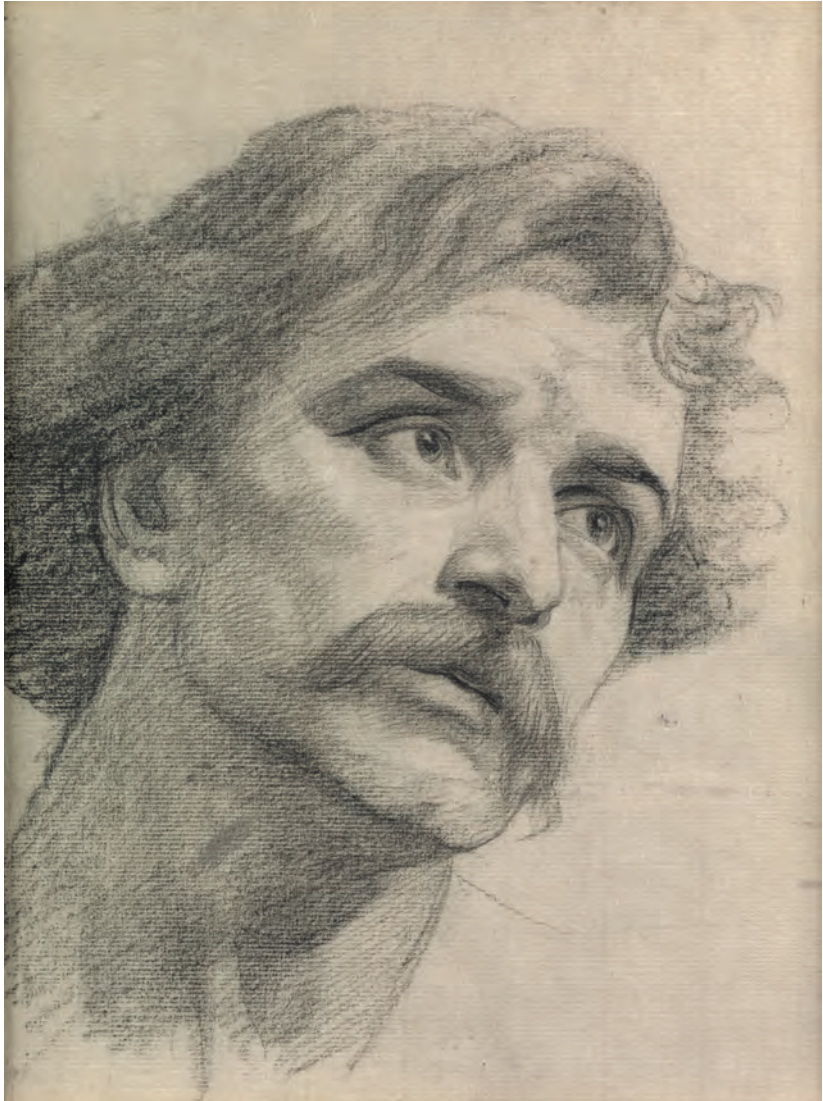


8 **Alice M. Mott fl. 1880-1908**

Head of a Girl

Pencil; inscribed verso.

15 $\frac{1}{4}$ x 11 $\frac{3}{4}$ inches



9 **Frederic James Shields 1833-1911**

Giuseppe Moto, Violinist

Charcoal.

13 x 9 $\frac{3}{4}$ inches



10 Edgar Albert Slade 1872-1963

Probably Stella Conder, née Maris, c 1900

Pencil; signed and inscribed 'St...'

10 ½ x 9 inches



11 **Alfred Kingsley Lawrence 1893-1975**

A Sergeant in the Royal Artillery

Pencil; signed and dated 1918.

9 x 6 inches



12 **Keith Henderson 1883-1982**

France, 1917

Pastel and pencil; initialled and titled.

9 ¾ x 12 inches



13 **Robert Randall 1864-1946**

Searchlights Looking for Zeppelins above London Bridge

Pastel and charcoal; labelled verso.

9 ¾ x 6 ½ inches



14 **Anthony Augustus Frederick Sandys 1829-1904**

Marie Meredith, c 1890

Coloured chalks; signed and titled.

17 x 13 inches



15 Anthony Augustus Frederick Sandys 1829-1904

Study of Mary Emma Jones, the Artist's Wife, for 'Girl with Doves', c 1867

Pencil and coloured chalks.

15 $\frac{3}{4}$ x 21 $\frac{1}{2}$ inches



16 **Winifred Sandys 1875-1944**

Dianeme

Pastel; signed and titled.

12 ½ x 9 inches



17 Winifred Sandys 1875-1944

Gertrude 'Girlye' Sandys, the Artist's Sister, in Fancy Dress
Pastel; signed and dated 1911.

19 ¼ x 9 ½ inches



18 **Winifred Sandys 1875-1944**

Gertrude 'Girlie' Sandys, the Artist's Sister

Pastel; initialed.

19 $\frac{3}{4}$ x 14 $\frac{1}{4}$ inches



19 **Winifred Sandys 1875-1944**

Gertrude 'Girlie' Sandys, the Artist's Sister

Pastel; initialled.

23 x 17 inches

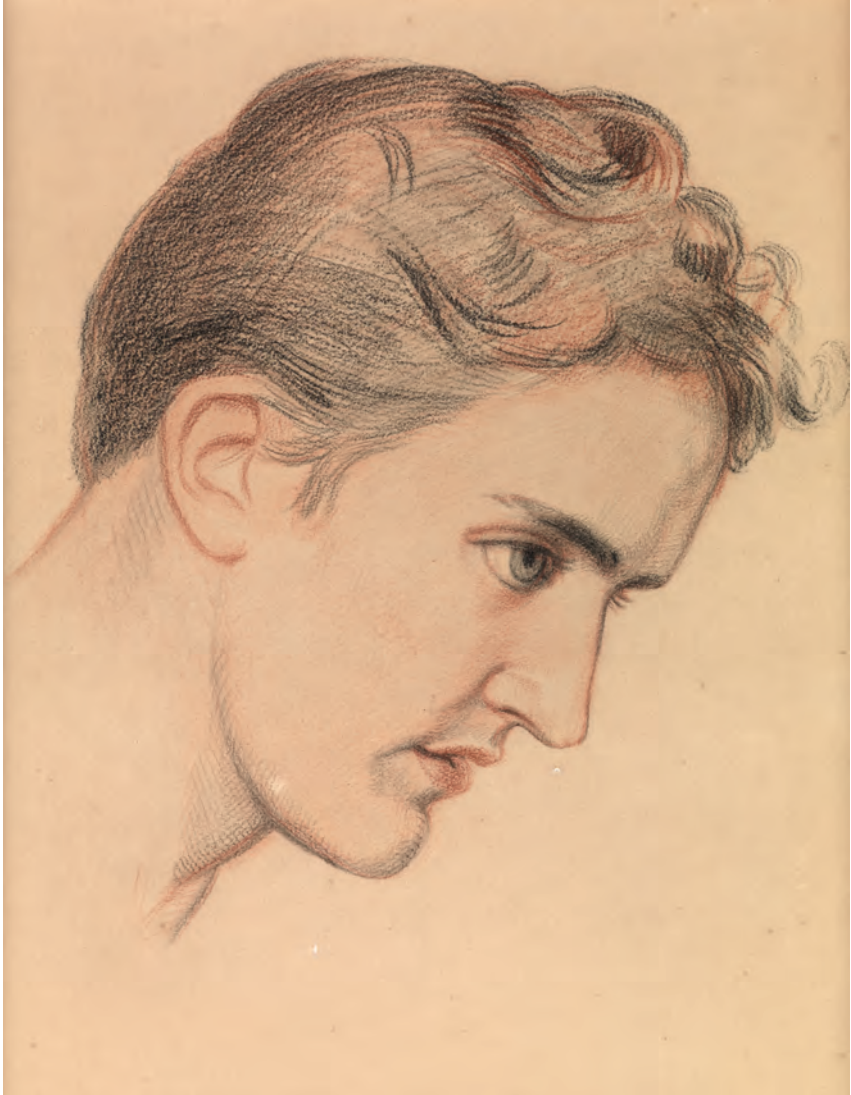


20 **Olive Branson 1885-1929**

Sleeping Greyhound

Pencil, pen and ink and wash; inscribed on backboard.

12 ½ x 10 ½ inches



21 **William Holman Hunt 1827-1910**

Study of Eugenie Sellers for 'The Lady of Shalott', c 1895

Coloured chalks; monogrammed.

18 x 13 ½ inches



22 **William Holman Hunt 1827-1910**

A Girl Leaning on a Mantelpiece, c 1862

Pencil; initialled and inscribed.

6 x 4 inches



23 **William Holman Hunt 1827-1910**

Rocks at Wady Zuara, the Dead Sea

Pencil; signed, inscribed and dated '54.

7 $\frac{3}{4}$ x 5 $\frac{1}{2}$ inches



24 **John Hayter 1800-1895**

Sir Edwin Landseer

Pencil; signed, inscribed, and dated 1826; doodles verso.

5 x 4 inches



25a **John Bathe 1849-1874**

Anatomical Study: the Human Skeleton, in Contrapposto
Pencil, pen and ink and wash; signed, inscribed and dated 'Dec. 1870'.
27 $\frac{3}{4}$ x 19 $\frac{1}{2}$ inches



25b **John Bathe 1849-1874**

Anatomical Study: Human Musculature, in Contrapposto

Pencil and wash; signed.

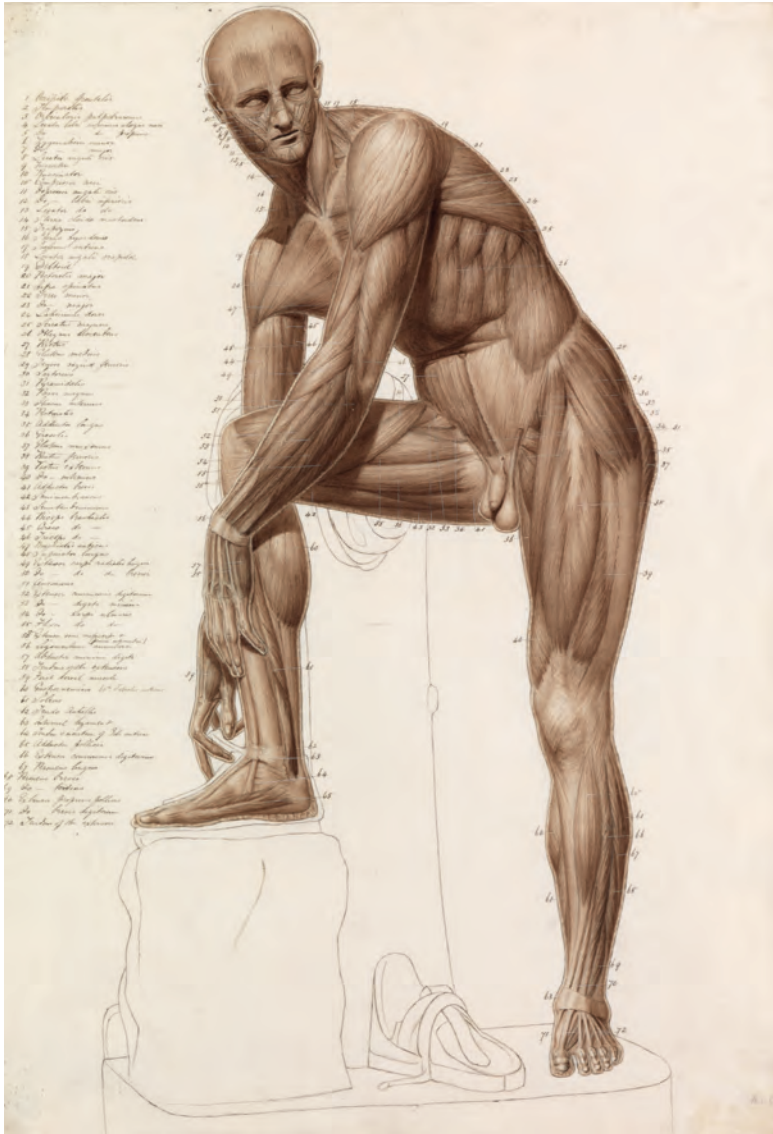
28 x 19 ½ inches



26a John Bathe 1849-1874

Anatomical Study: the Human Skeleton, in the Pose of Praxiteles' 'Hermes Fastening his Sandal'

Pencil, pen and ink and wash. 27 x 17 ½ inches



26b John Bathe 1849-1874

Anatomical Study: Human Musculature, in the Pose of 'Hermes...'

Pencil, pen and ink and wash.

27 ¼ x 18 ½ inches



27a **Sir Edward Coley Burne-Jones 1833-1898**

Seated Figure with a Book

Brown and white body-colour.

12 x 8 ½ inches



27b Sir Edward Coley Burne-Jones 1833-1898

Seated Figure

Brown and white body-colour.

12 x 8 ½ inches



Sir Edward Coley Burne-Jones 1833-1898

Throughout his life Sir Edward Coley Burne-Jones's fey sense of humour found an outlet in caricatures, often sketched in the company of friends or in letters to them, and they counterpoint the seriousness of his studio work. Burne-Jones was a thin man, but his friends William and Jane Morris were inclined to fat; underlying the Rabelaisian humour is gentle concern for his friends' health.

28 *Self-Caricature*, 1874

Pencil.

6 ½ x 5 inches



29 *The Campagna – Mrs Morris in Italy*, c 1873
Pencil; inscribed.
6 ¾ x 4 ¼ inches

30 *At Venice*, c 1873
Pencil; titled.
4 ¼ x 6 ¾ inches



31 **George Howard, 9th Earl of Carlisle 1843-1911**

Lord Leighton Sketching

Pencil; indistinctly inscribed.

9 ¼ x 5 ¾ inches



32 **John Linnell 1792-1882**

Donkeys

Pencil; signed, inscribed and dated 1824.

4 ½ x 6 ¾ inches



33 **Charles Keene 1823-1891**

Snoozing

Pencil; sketch of a dog's head verso.

4 x 6 ¼ inches



34 **Charles Keene 1823-1891**

Post Boys

Pen and ink; sketch of a gentleman in a top hat verso.

8 x 5 inches



35 **George Adolphus Storey 1834-1919**

*An Anatomy Class at the Royal Academy Schools with
Professor Partridge*

Pen and ink; monogrammed, inscribed and dated 1854. 7 ½ x 9 ¾ inches



36 **Keeley Halswelle 1832-1891**

In Vino Veritas

Pencil and wash; titled, inscribed and dated 'Sept '55'.

10 ¼ x 7 inches



37 **William Mulready 1786-1863**

Boy with a Book

Pencil; inscribed verso.

4 ½ x 2 ¾ inches



38 **Edward Julius Detmold 1883-1957**

Rose Shipman

Pencil; signed, inscribed and dated 1915.

12 x 7 $\frac{3}{4}$ inches



39 **Cecil Gordon Lawson 1849-1882**

Study for 'The Minister's Garden', c 1978

Watercolour.

9 ½ x 19 inches



40 **Pascal Adolphe Jean Dagnan-Bouveret 1852-1929**

A Breton Girl

Coloured chalks; signed.

10 x 7 ½ inches



41 **Arthur Ambrose McEvoy 1878-1927**
Anais Brockhurst Wearing a Béguin, c 1922
Pencil and coloured wash; signed.
9 ½ x 8 ¾ inches



42 **Sir Lawrence Alma-Tadema 1836-1912**

Kate Millet

Pencil; signed, inscribed and dated '9/1 91'.

9 ¼ x 6 ¼ inches



43 **Stanley Cornwell Lewis 1905-2009**

Rest, c 1960

Pencil; signed and labelled verso.

10 x 24 inches





44 **Robert Anning Bell 1863-1933**

The Offering

Crayon; signed.

10 ½ x 7 ½ inches



45 **Elizabeth Siddal 1834-1862**

La Belle Dame Sans Merci, c 1855

Pencil; inscribed verso.

5 $\frac{3}{4}$ x 4 inches



46 **John Richard Clayton 1827-1913**

The Crossing, c 1860

Pencil; inscribed on backboard.

7 $\frac{3}{4}$ x 6 $\frac{1}{2}$ inches



47 **Ford Madox Brown 1821 - 1893**

November: the Sower, Study for a Tile at Queens College Hall, Cambridge, 1864

Watercolour.

10 x 5 inches



48 **Frederic, Lord Leighton of Stretton, 1830-1896**

Seated Figure and Angel

Black and white chalks; inscribed verso.

7 $\frac{1}{4}$ x 10 $\frac{3}{4}$ inches



49 **Frederic, Lord Leighton of Stretton, 1830-1896**

Sketch of the Minstrel in 'Dante in Exile', c 1864

Black and white chalks.

8 ¼ x 5 ¾ inches



50 **Frederic, Lord Leighton of Stretton, 1830-1896**

Drapery Study for 'The Daphnephoria', 1874-6

Black and white chalks; inscribed under mount and stamped.

15 ¼ x 9 ¼ inches



51 **Sir Edward John Poynter 1836-1919**
Study of Seated Nudes for 'Sea Bath', 1914
Pencil and chalk; bears studio stamp.
10 x 13 inches



52 **Sir Max Beerbohm 1872-1956**

James Pryde

Pencil; inscribed.

14 ¼ x 8 ½ inches



53 **Charles Burton Barber 1845-1894**

Girl Leaning on a Chair

Crayons; signed and dated 1881.

16 x 12 ½ inches



54 **Catherine Frances Manners Pearce 1883-1963**

Reflection

Pen and ink; monogrammed, inscribed verso and dated 1908.

18 ½ x 11 ½ inches



55 **Dante Gabriel Charles Rossetti 1828-1882**

Alexa Wilding, c 1865

Pencil; inscribed verso.

16 ¼ x 12 ¼ inches



56 Evelyn de Morgan (née Pickering) 1855-1919

Head of a Girl

Coloured chalks.

11 ½ x 8 inches



57 Evelyn de Morgan (née Pickering) 1855-1919

Head of a Girl

Pencil.

10 x 6 $\frac{3}{4}$ inches



58 **Herbert James Draper 1864-1920**

Study for 'Tristram and Yseult', c 1901

Chalks.

21 $\frac{1}{4}$ x 11 $\frac{3}{4}$ inches



59 **Herbert James Draper 1864-1920**

Study for 'The Trailing Clouds of Glory', 1898

Chalks.

20 x 10 1/4 inches

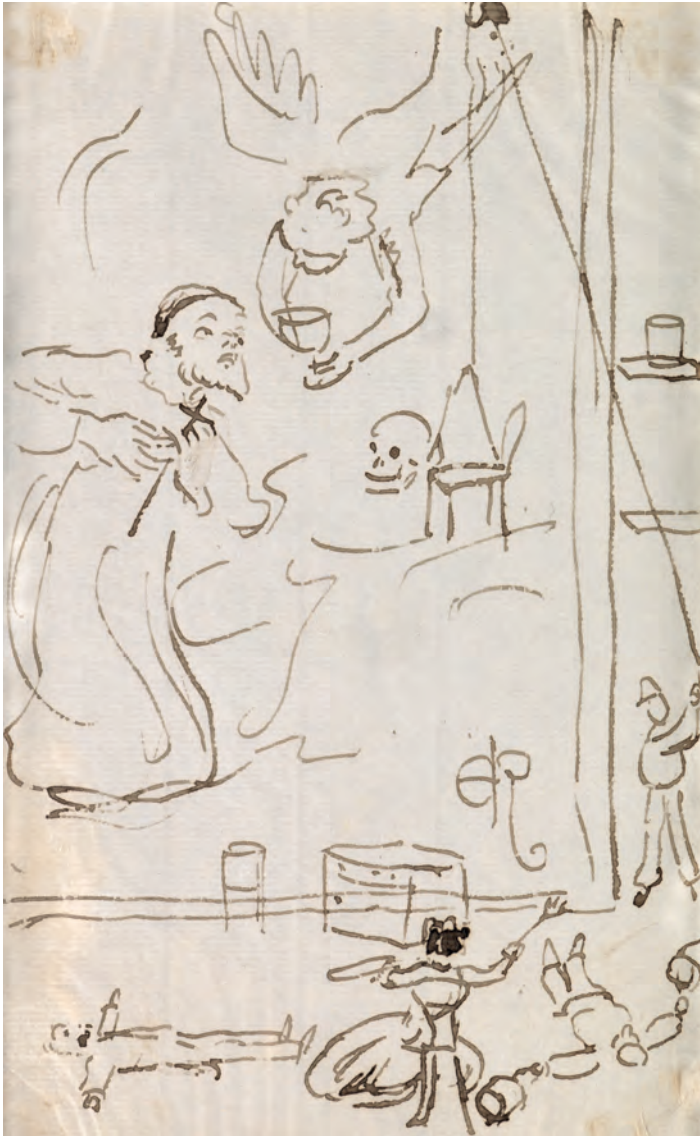


60 **Sir John Everett Millais 1829-1896**

Palm Trees

Pencil; sketches verso.

16 ½ x 7 ½ inches

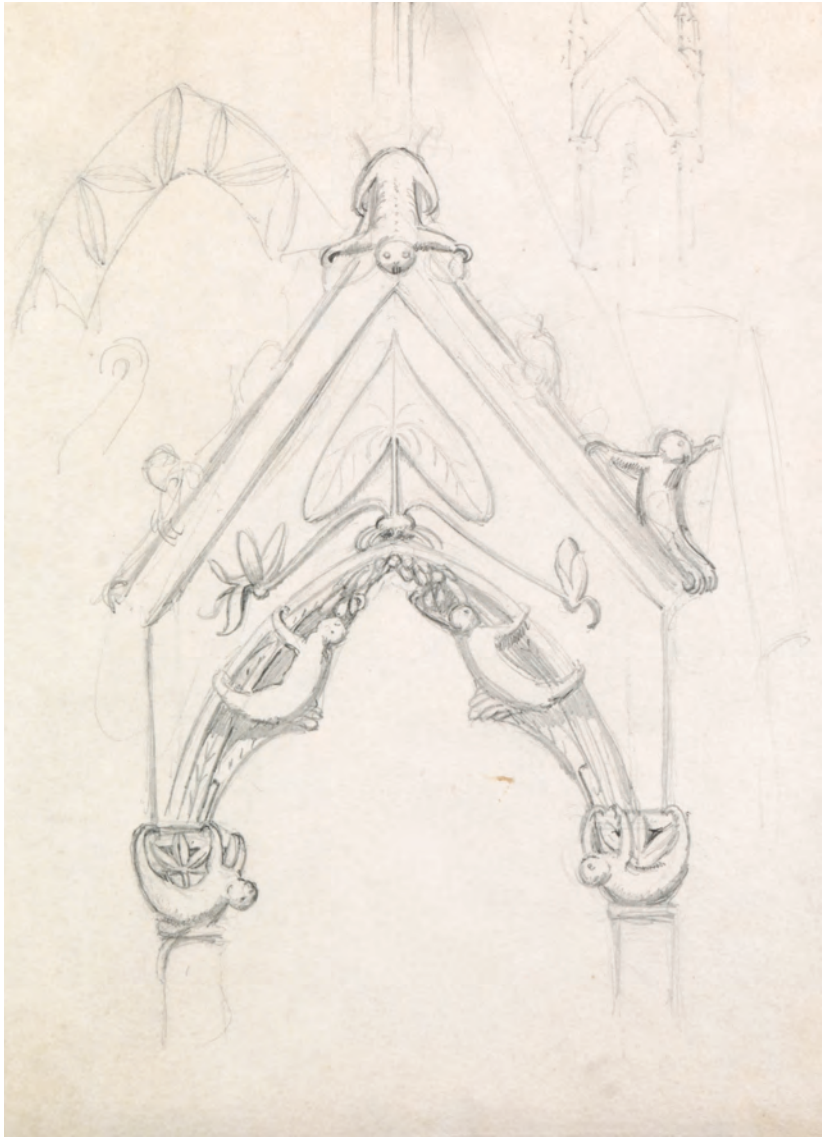


61 **Sir John Everett Millais 1829-1896**

Rossetti Painting Something Large, 1854

Pen and ink.

7 ½ x 4 ¾ inches



62 **Sir John Everett Millais 1829-1896**

A Whimsical Gothic Archway, c 1853

Pencil.

8 x 5 $\frac{3}{4}$ inches



63 **Sir John Everett Millais 1829-1896**

A Wife - Illustration to a Poem, 1859

Pencil; monogrammed.

4 x 5 ½ inches



64 **Sir John Everett Millais 1829-1896**

Married for Rank

Pencil, pen and ink; monogrammed, inscribed and dated 1853.

9 ½ x 6 ¾ inches

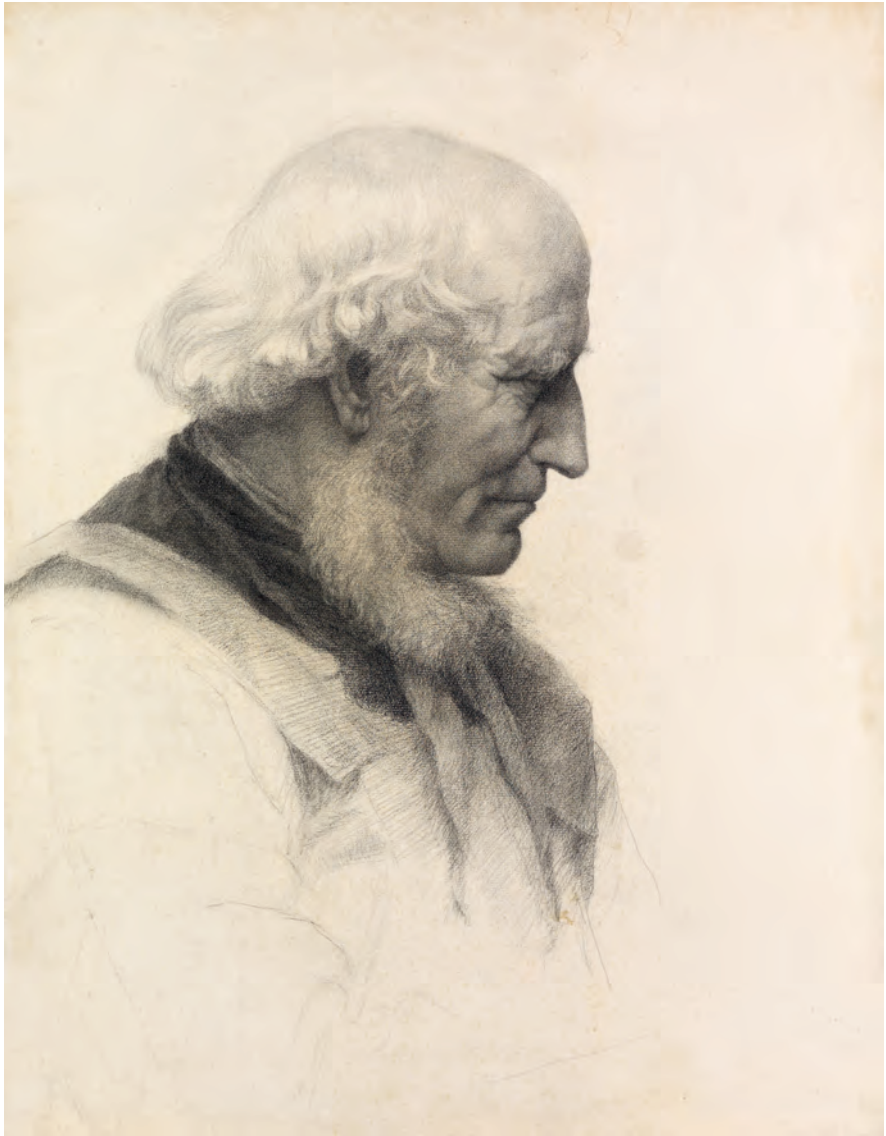


65 Augustus Edwin John 1878-1961

Ida Nettleship

Pencil; inscribed verso.

10 ¼ x 8 inches



66 **Circle of Richard Ansdell**

A Venerable Head

Charcoal.

26 x 20 inches



67 **Charles West Cope 1811-1890**

Study of a Woman's Head

Chalks; signed, inscribed and stamped verso.

13 x 9 inches



68 Attributed to Thomas Cooper Gotch 1854-1931

Study of a Young Boy

Pencil and chalk.

11 ¼ x 7 ½ inches



69 **Bernard Meninsky 1891-1950**

Head of a Girl

Pencil; signed and dated 1912.

9 $\frac{3}{4}$ x 8 inches



70 **Walter Fryer Stocks 1842-1915**

Miss Wells

Coloured chalks; titled.

17 x 14 inches



71 **Eggon Sillif Lundgren 1815-1875**

The Swedish Opera, c 1850

Pencil and watercolour heightened with white.

6 ¾ x 10 inches



72 **Simeon Solomon 1840-1905**

Om Mani Padma Om

Watercolour; signed and titled (with a Sanskrit mantra for compassion).

13 x 9 ¼ inches



73 **Count Ul de Rico b. 1944**

Siegfried and the Rhine Maidens

Pen and ink and wash heightened with white.

7 $\frac{3}{4}$ x 5 $\frac{3}{4}$ inches



74 **John Ruskin 1819-1900**

The Earth, c 1878

Pencil, pen and ink and watercolour heightened with white.

4 ½ x 4 inches



75 **John Ruskin 1819-1900**

France, c 1878

Pen and ink and watercolour heightened with white.

3 x 4 inches



76 **Count Amadeo Preziosi 1816-1882**

A Huqqa Smoker

Pencil and watercolour.

9 ½ x 7 inches



77 **Sir Frank Dicksee 1853-1928**

Bridge at Lucerne

Watercolour.

15 x 10 $\frac{3}{4}$ inches



78 **Edward Robert Hughes 1851-1914**

Study of a Man

Coloured chalk; signed.

14 x 12 inches



79 **Joseph Edward Southall 1861-1944**

Anne Butler, the Artist's Wife, for 'The Coral Necklace'

Red chalk heightened with white; monogrammed and dated 1894.

10 x 7 ¼ inches



80 George Frederick Watts 1817-1904

Jane Senior Tidying the Artist's Drawings, c 1857

Pencil.

11 $\frac{3}{4}$ x 8 $\frac{3}{4}$ inches



81 **George Frederick Watts 1817-1904**

Studies of Drapery for the Figure of Time in 'Time, Death and Judgement', 1865-6

Pencil and white chalk. 22 x 15 inches



82 **Austin Osman Spare 1886-1956**

Nude

Trois crayons.

12 x 6 $\frac{3}{4}$ inches



83 **Austin Osman Spare 1886-1956**

A Spooky Boy

Pencil, crayon and wash with white; monogrammed and dated 1933.

11 x 7 inches



84 **Jean Hugo 1894-1984**

Jean Cocteau

Pencil; monogrammed and dated '23.

11 x 7 $\frac{3}{4}$ inches



85 **William Bell Scott 1811-1890**

Josephine Butler, Early Feminist Campaigner

Pencil; initialed, inscribed and dated 'Sep 1856'.

11 ¼ x 7 ¾ inches



86 Sir William Rothenstein 1872-1945

Probably Alice Knewstub, Lady Rothenstein, the Artist's Wife

Metalpoint; with another study verso.

12 ¼ x 9 ¼ inches



87 **Henry Tonks 1862-1937**

Head of a Girl, c 1920

Crayon; initialled.

12 x 7 ½ inches



88 **Robert Catterson-Smith 1853-1938**

Head of a Woman

Pencil.

12 $\frac{3}{4}$ x 11 $\frac{3}{4}$ inches

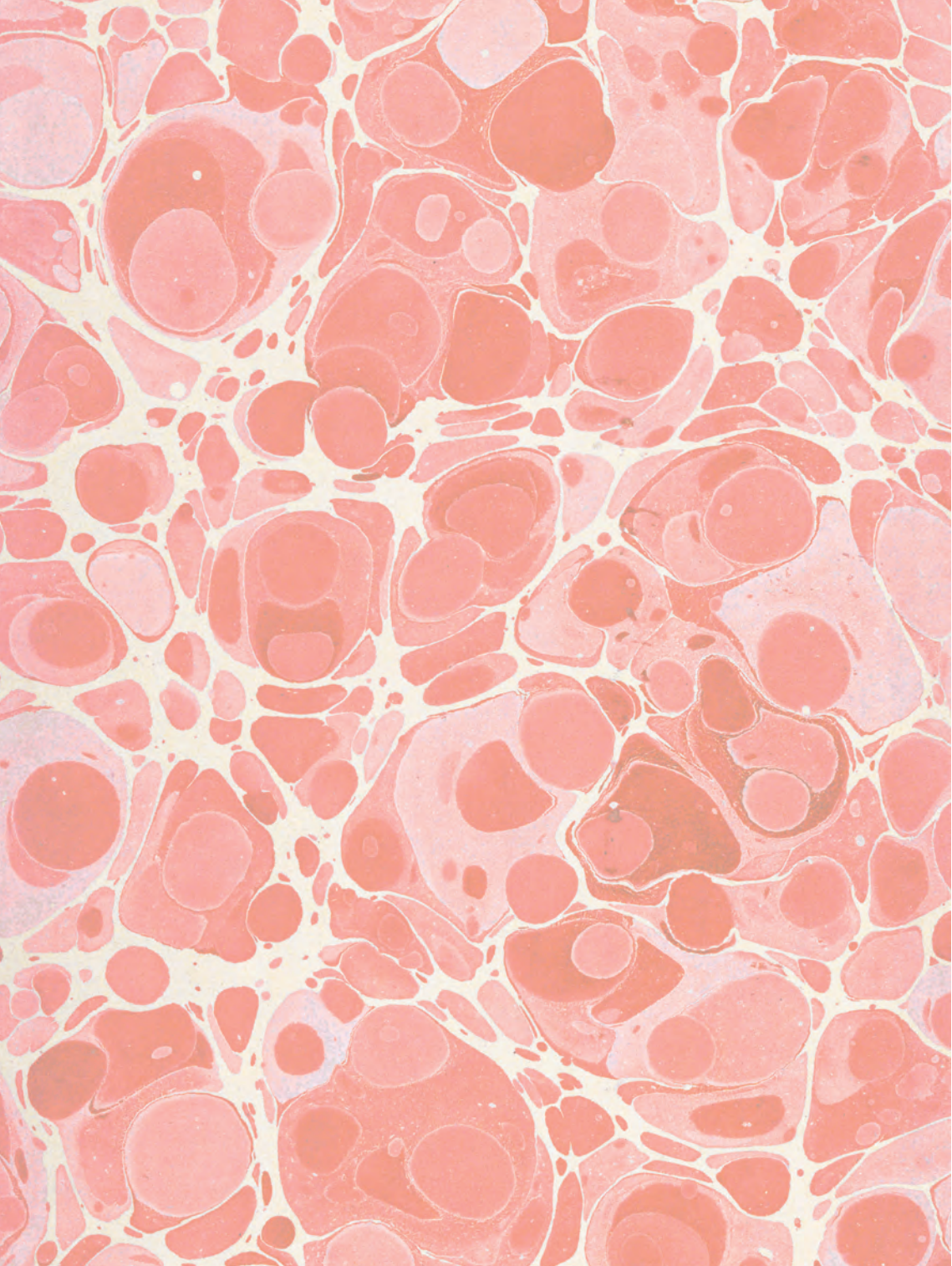


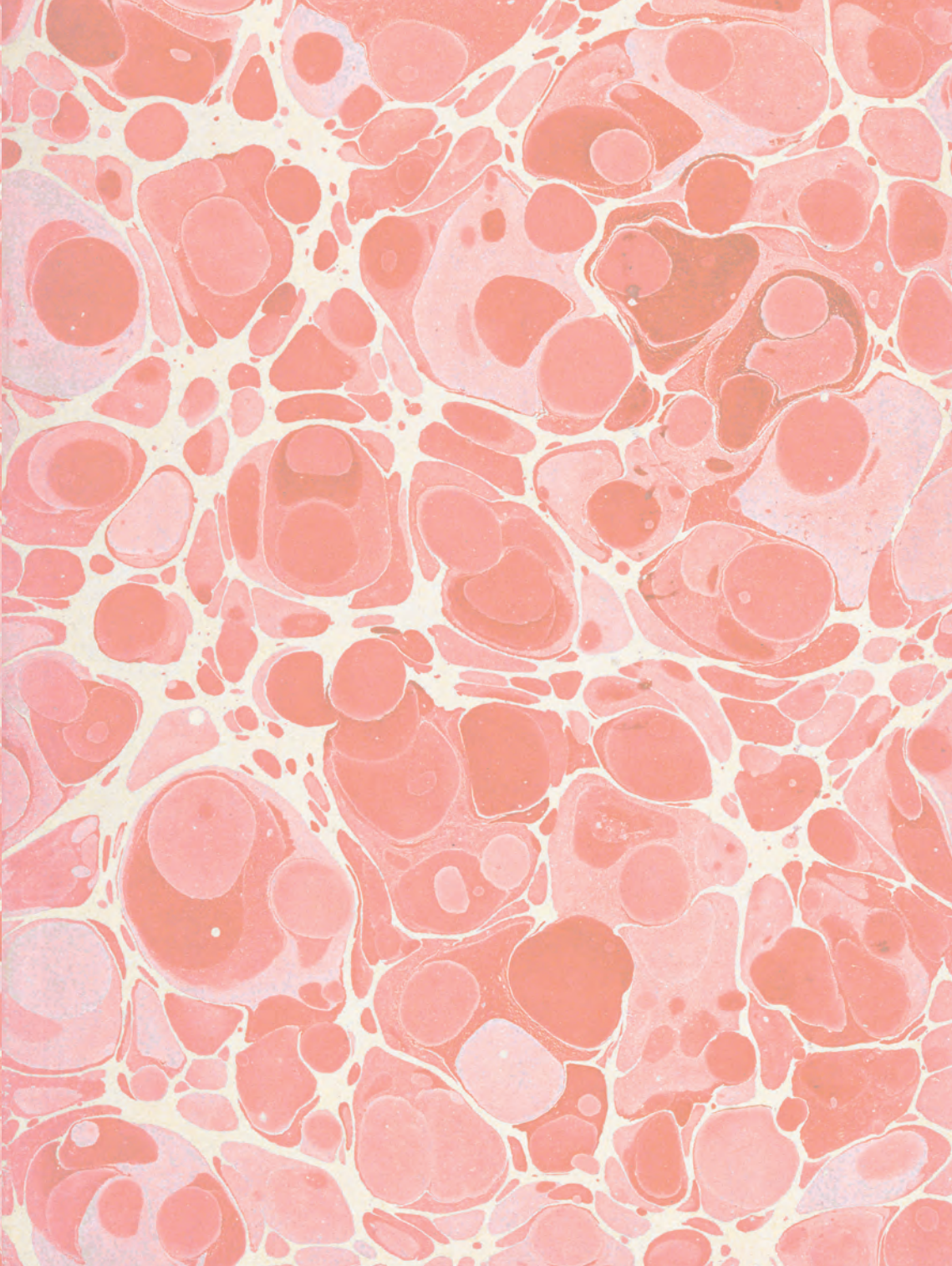
89 **George Dawe 1781-1829**

John Bellingham, Assassin of Prime Minister Spencer Perceval

Pencil; signed.

8 ½ x 7 inches





MAAS GALLERY

DRAWINGS

2016

